

AT-HPF-0630HC

2022-3-21

6-30GHz High Pass Filter, 2.92mm



Product Overview

AT Microwave offers high performance coaxial filter from low frequency to 67GHz, including BPF-Band Pass Filter, LPF-Low Pass Filter and HPF-High Pass Filter.

These filters are based on MMIC technology with small size and fast delivery time.

More information, please visit www.atmicrowave.com

Advantages

- ✓ Low Insertion Loss
- ✓ Good Return Loss
- ✓ High Stop Band Suppression
- ✓ Sharp Roll-Off

Application

- ✓ Automotive Radar Test
- ✓ FOD (Foreigner Objects Debris)
- ✓ Test Equipment
- ✓ ROF (RF Over Fiber)
- ✓ Radar System

Key Features

| Parameter | Min | Typical | Max |
|-------------------------|-------|---------|---------|
| Passband Frequency | | 6-30GHz | |
| Passband Insertion Loss | | -2.6 dB | -3.5 dB |
| Passband Return Loss | -8 dB | -15 dB | |
| Rejection@ 4.6GHz | -15 | -20 dB | |
| Rejection@ 4GHz | -35 | -40 dB | |
| Spec Temp | | 25C | |





AT-HPF-0630HC

Coaxial High Pass Filter

Mechanical Information

| Item | Description |
|---------------|---------------|
| RF1 Port | 2.92mm Female |
| RF2 Port | 2.92mm Male |
| Case Material | Brass |
| Finish | Gold Plated |
| Weight | 25g |
| Size: | See outline |

Absolute Maximum Ratings Table

| Parameter | Value |
|-----------------------|--------------|
| RF Power | +30dBm |
| Operating Temperature | -40 to +85C |
| Storage Temperature | -65 to +150C |

Part Number Selection Guide

| Item | Description |
|----------------|----------------------------|
| Part Number | In Default, Female to Male |
| Part Number-FF | RF1=Female, RF2=Female |
| Part Number-MM | RF1=Male, RF2=Male |

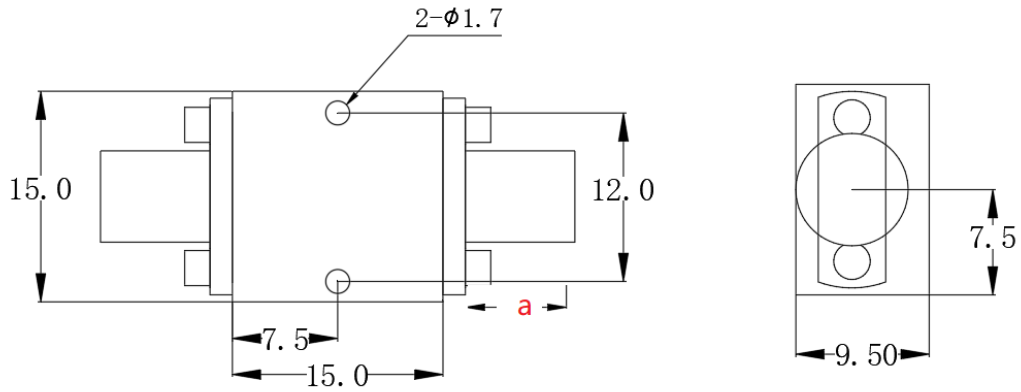
Test Result

Performance may vary slight from unit to unit.

To be added.



Dimension (mm)



| | <26.5GHz | <40GHz | <50GHz | <67GHz |
|------------|----------|--------|--------|--------|
| Connector | SMA | 2.92mm | 2.4mm | 1.85mm |
| Lenth of a | 9.4mm | 9.5mm | 10.8mm | 11.3mm |

Note: Female Default. Contact with us for other types.

